

A close-up photograph of five diverse young adults smiling broadly. In the foreground, a young woman with curly hair and large hoop earrings smiles on the left, and a young woman with a black hat and a patterned top smiles on the right. Behind them, a young man with a red shirt and another young woman are also smiling. The background shows a blue metal fence and a building.

Student Guide

2023/24

Welcome to Navitas English

Your Best English school in Australia established in 1981 and proudly recognized by the Australian Government, Navitas English is one of the largest networks of English schools in Australia and part of the Navitas Group, a leading global education provider delivering quality education.



Bruno Prats de Oliveira
Winner 2021 NSW International
ELICOS Student of the Year
Navitas English and Skippy!!

200,000+
students
since 1981



70+
Direct Entry
Pathways



Founding
member
of English
Australia



100+
student
nationalities



92% Student
pass rate to
pathway

September 2018
Teaching and Learning Report

Contents

Your Schools	
Perth	2
Sydney Hyde Park	3

Your Courses	
General English	4
Academic English	4
IELTS preparation	5
Cambridge preparation	5

myStudy options	6
Student services and benefits	6
Pathway to further education	8
Our pathway partners	8
Entry requirements	10



Official test
centre for
Cambridge,
PTE-Academic
and TOEFL



Your Schools

There are two great locations to choose from, each offering a different experience, opportunity and adventure for you to enjoy.

The journey with Navitas English is a powerful one, being part of an Australian dream with a global reach. Your ambitions, goals and challenges will start immediately with us.



Perth, Western Australia

Located in multicultural Northbridge, only a 10-minute walk from the city centre and central train station with free Perth transport at the doorstep.

Capacity 442 | Classrooms 13 | Average class size 14

Media room | Student Lounge | Computer lab
| Outdoor terrace | Navitas English Test Centre



Perth
factsheet

Perth

One of the most affordable states with great beaches



Enjoy a Free Flight in Australia

Our Airlink program offers you a free flight between the two schools in the Navitas English network, helping you enjoy more of our beautiful country during your stay.

To receive a free one-way flight between our Australian schools, study at least 17 weeks with us, with four weeks at the first school.

Sydney Hyde Park

Fantastic harbourside city with excellent job opportunities and lifestyle



SCAN OR CLICK QR CODE
Airlink terms & conditions

Sydney, New South Wales

Located opposite Hyde Park in the heart of Sydney, near shops and food outlets with Town Hall and Museum train station a 5-minute walk away. The campus is also home to the Australian College of Applied Professions and both La Trobe and Western Sydney university campuses.

Capacity 600 | Classrooms 17 | Average class size 14

Library | Resource centre | Student Lounge | Computer lab
| Kitchen | Table tennis | Navitas English Test Centre



Sydney
factsheet

Your Course + Your Options

We have four main courses to support you on your journey of self-discovery, self-development and empowerment. Each course will challenge and support you on your path to further education and enhance job or career outcomes with the spirit of adventure.



General English

Develop English skills and confidence you can use daily. You will develop skills to fast track your career and support your work prospects in real life with other English speakers giving you confidence to live and speak with ease in an English speaking environment.

Levels - Elementary to Advanced starting every Monday via day 1 placement test.



Academic English

This will help you develop the skills you need to participate confidently and effectively in a university or TAFE program in Australia. You will learn how to plan, research and structure written assignments, and express your ideas clearly in spoken presentations. As well as providing direct entry to a wide range of universities and TAFEs, Academic English courses provide you with real-life learning about the culture, expectations and requirements of tertiary education in Australia.

Levels - Intermediate to Advanced. Regular intakes throughout the year.

Entry test - Navitas English test or IELTS or TOEFL or Versant or PTE Academic or HKDSE.



Progression and success is key – you will have a one-to-one meeting weekly with your teacher to review your progress so you are guided to reach your best potential.



IELTS Preparation

Improve your skills and learn the test strategies and techniques you need to achieve your very best IELTS score. Our IELTS courses will develop and improve all the necessary skills such as writing well-structured essays and expressing ideas clearly and effectively when speaking. Regular test practice and guidance will give you the confidence you need when taking the official test. IELTS is globally recognised and enables our students to achieve their goals and dreams, from entry to university, to career advancement and for migration purposes.

Levels - Intermediate to Advanced starting every Monday.

Entry test - Navitas English IELTS pretest or IELTS.



Cambridge Preparation

Our Cambridge preparation courses fast track your reading, writing, listening and speaking skills and give you a strong foundation in both grammatical accuracy and vocabulary range. By providing clear exam strategies and techniques with regular exam practice and one-to-one teacher support, you will develop life-long study skills and have the very best chance to succeed with high grades in the official Cambridge examination.

Levels - B1 Preliminary, B2 First, C1 Advanced, C2 Proficiency regular intakes throughout the year.

Entry test - Navitas English Cambridge pre-test, IELTS or Cambridge exam.

COURSE	Timetable Options	Weekly Study Hours	Duration	MyStudy Electives	IELTS Score												
					A1 Beginner	A2 Elementary	4.0	4.5	5.0	5.5	6.0	6.5	7.0	7.5	8.0	8.5	C2
General English	08.10 - 14.00	20 + 5 hrs	1 - 60 weeks	Yes - study practice	Ask for study advice		PERTH & SYDNEY										
	17.10 - 21.30	20 hrs		-	PERTH & SYDNEY												
Cambridge Preparation B1 Preliminary, B2 First C1 Advanced, C2 Proficiency	08.10 - 14.00	20 + 5 hrs	9-12 weeks subject to exam dates	Yes - exam practice			PERTH & SYDNEY		PERTH & SYDNEY		PERTH & SYDNEY		PERTH & SYDNEY				
	17.10 - 21.30	20 hrs		-			PERTH & SYDNEY		PERTH & SYDNEY		PERTH & SYDNEY						
IELTS Preparation	11.30 - 17.05	20 + 5 hrs	1 - 25 weeks	Yes - exam practice			PERTH & SYDNEY										
	17.10 - 21.30	20 hrs		-			PERTH & SYDNEY										
Academic English LEVEL 1, 2, 3 & 4	11.30 - 17.05	20 + 5 hrs	10 weeks per level	Yes - assignments			PERTH & SYDNEY										

General English, Academic English, Cambridge and IELTS Preparation courses are delivered face-to-face at both Perth & Sydney campus locations with a maximum class size of 18 students. CRICOS COURSE CODES: (General English - 0101937) (Academic English 1 - 111367A, Academic English 2 - 111368M, Academic English 3 - 109382J, Academic English 4 - 109383H) (Cambridge Preparation B1 Preliminary - 030816M, Cambridge Preparation B2 First - 030815A, Cambridge Preparation C1 Advanced - 030817K, Cambridge Preparation C2 Proficiency - 030818J) (IELTS Preparation - 093053F). Disclaimer - Timetables, course and options are subject to campus location and change. All courses are open to student, working holiday and visitor visa holders.



Course finder, learning outcomes and lesson plans

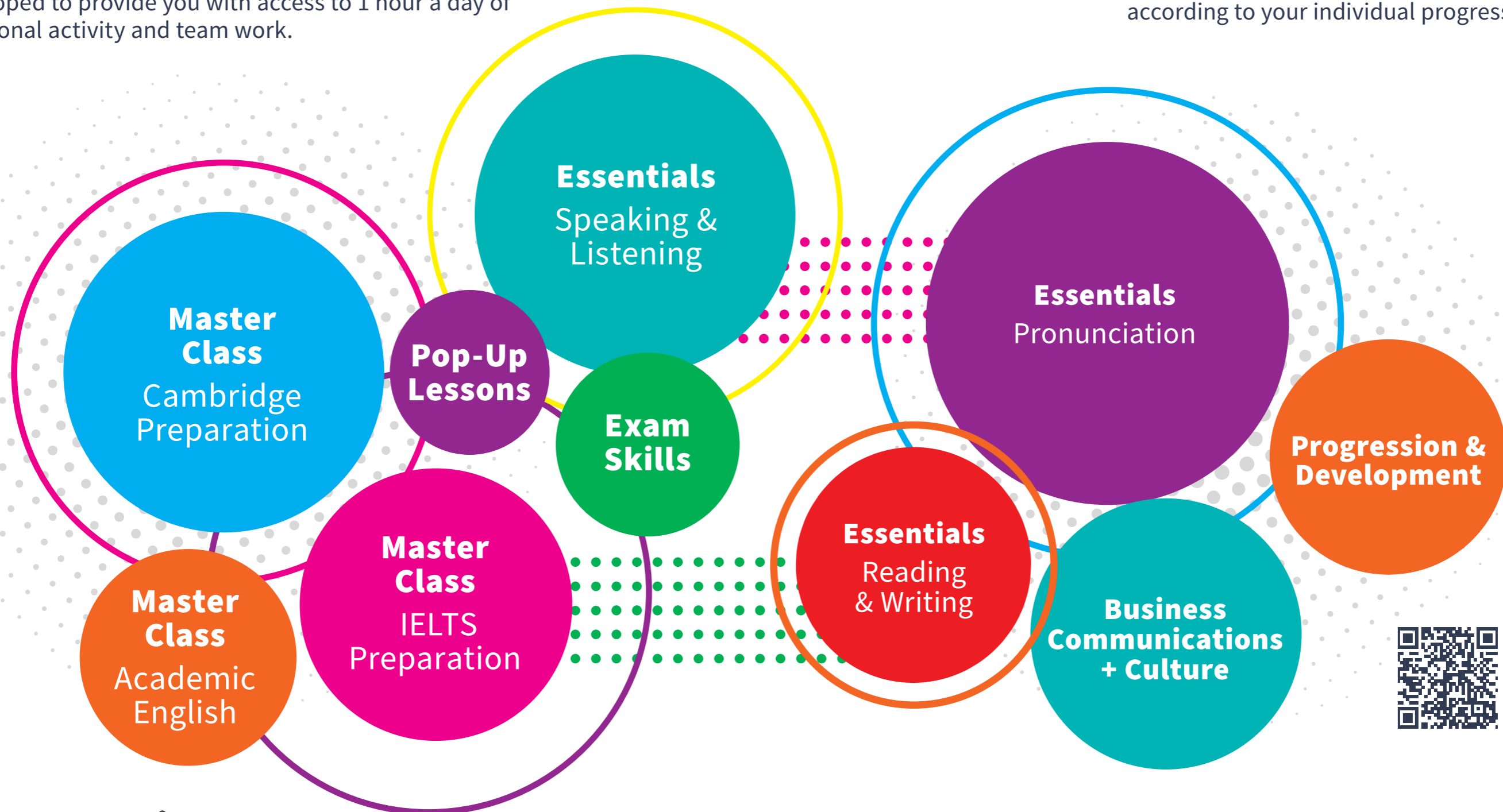


Course Calendar

Your Course + Your Options

myStudy is an individual learning program for day students and is structured to support your studies and focus on specific language skills and personal priorities for your progression and future development. myStudy is a series of options which have been developed to provide you with access to 1 hour a day of additional activity and team work.

The options are designed to complement what you study in class, and also allow you to follow your interests in a wide range of topics while studying at Navitas English. On Day 1 of your studies with us you will learn about myStudy options and how they can help your learning. Your teacher will provide you with the myStudy schedule in class and will recommend what options are best for you to join according to your individual progress in class.



Student Services

Options may be subject to change and all day students can access myStudy subject to timetable permitting



Student discounts - gym & travel



24hrs Emergency support



Job support techniques



Airport pickup options



Accommodation - homestay and independent



Boomerang activities program



Carer service for under 18s



Navitas English Services

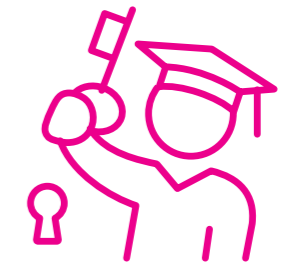
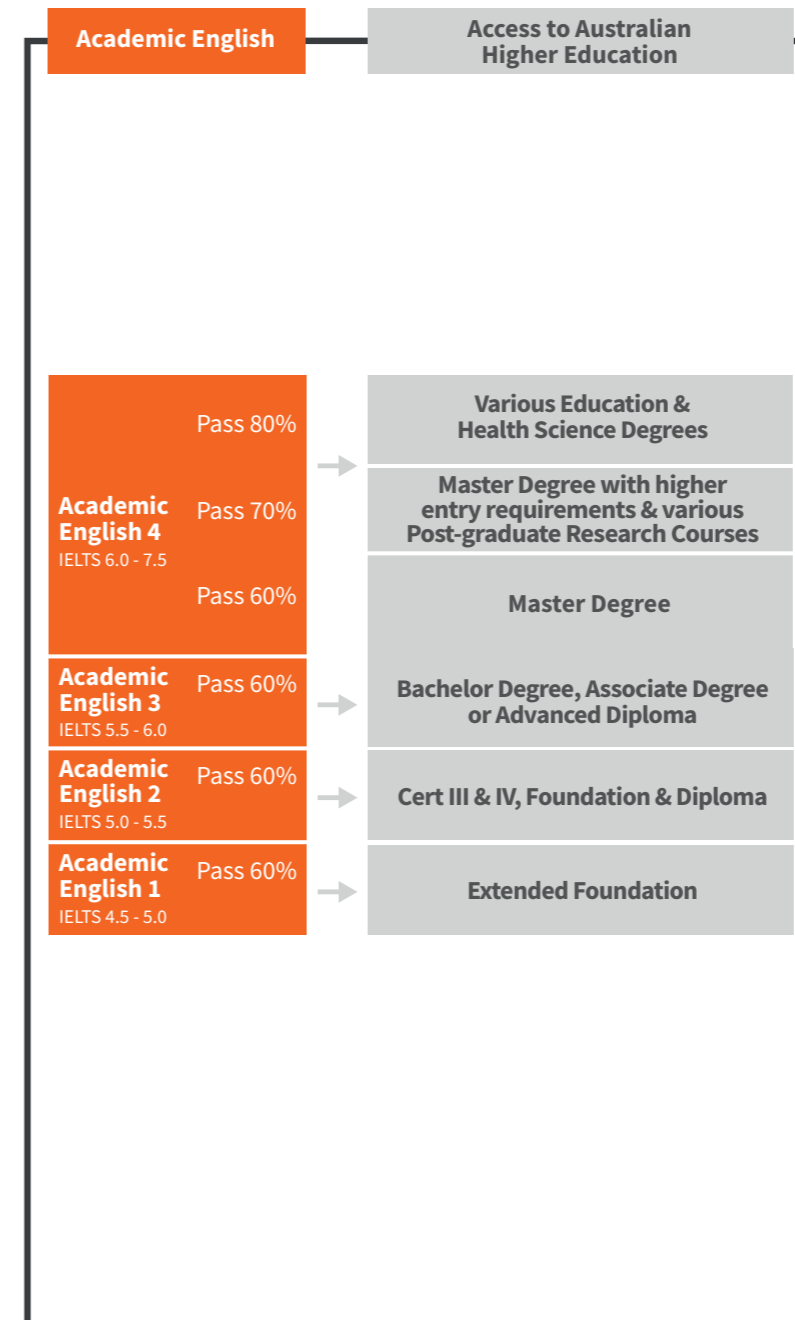
Pathway to further education and our pathway partners

Navitas English has over 70 direct entry agreements with universities, colleges and TAFEs in Australia, providing pathways to Certificate, Diploma, Bachelor and Master's degrees. Your pathway is unique, and our expert Admissions team will advise you of the best study plan to meet your learning objectives and access your future.

Course progression from General English, Cambridge and IELTS Preparation to Academic English

IELTS	CEFR	Online Quiz Score	General English	Cambridge Preparation	IELTS Preparation	Academic English
8.5	C2	41-50	Advanced Leads to AE 4	C2 Proficiency Leads to AE 4	Advanced Leads to AE 4	Academic English 4 IELTS 6.0 - 7.5 Pass 80%
8.0						
7.5	C1	31-40	Upper Intermediate Leads to AE 3	C1 Advanced Leads to AE 4	Upper Intermediate Leads to AE 3	Academic English 3 IELTS 5.5 - 6.0 Pass 60%
7.0						
6.5	B2	21-30	Intermediate Leads to AE 2	B2 First Leads to AE 3	Upper Intermediate Leads to AE 3	Academic English 2 IELTS 5.0 - 5.5 Pass 60%
6.0						
5.5	B1	16-20	Pre-Intermediate Leads to AE 1	B1 Preliminary Leads to AE 2	Upper Intermediate Leads to AE 3	Academic English 1 IELTS 4.5 - 5.0 Pass 60%
5.0						
4.5	A2	6-15	Elementary	B1 Preliminary Leads to AE 2	Upper Intermediate Leads to AE 3	Academic English 1 IELTS 4.5 - 5.0 Pass 60%
4.0						
	A1	0-5	Beginner Contact us for advice			

Course progression from Academic English to your Pathway Partner



APPLY

If you don't have an IELTS score you can take our entry test in your home country.

STUDY

Successfully completing an Academic English course is the fastest way to meet our partners' English language requirements.

CHOOSE

Create a flexible English and further studies plan. With your Academic English result you can articulate to over 70 pathways in Australia.

PATHWAY

Start your further studies with one of our pathway partners after successfully completing Academic English 2 or 3.



View a full listing of ALL our pathway partners

For illustration purposes and pathway partners may change entry requirements

Entry requirements

To ensure your class best matches your English level, on your first day at Navitas English you will take a short test before joining class. Some courses require a minimum level of English for entry:

General English

- No minimum
- If you are a beginner (below CEFR A1) please contact us for study advice.

Academic English 1 (IELTS 4.5 - 5.0)

- Navitas Academic English Entry Test: pass
- IELTS Academic: 4.5 overall (writing 4.5, other bands 4.0)
- Pearson PTE Academic: 30 (writing 30, other skills 24)
- TOEFL iBT: 32 (writing 12)
- Versant: 37 (writing 37, other skills 32)

Academic English 2 (IELTS 5.0 - 5.5)

- Successful completion of Academic English 1
- IELTS Academic: 5.0 overall (writing 5.0, other bands 4.5)
- Pearson PTE Academic: 36 (writing 36, other skills 30)
- TOEFL iBT: 35 (writing 14)
- Versant: 41 (writing 41, other skills 37)
- HKDSE English Grade 2

Academic English 3 (IELTS 5.5 - 6.0)

- Successful completion of Academic English 2
- IELTS Academic 5.5 (writing 5.5, other bands 5.0)
- Pearson PTE Academic 42 (writing 42, other skills 36)
- TOEFL iBT: 46 (writing 18)
- Versant: 46 (writing 46, other skills 41)
- HKDSE English Grade 3

Academic English 4 (IELTS 6.0 - 7.5)

- Successful completion of Academic English 3
- IELTS Academic 6.0 (writing 6.0, other bands 5.5)
- Pearson PTE Academic 50 (writing 50, other skills 42)
- TOEFL iBT: 60 (writing 21)
- Versant: 51 (writing 51, other skills 46)
- HKDSE English Grade 4

IELTS Preparation

- Navitas IELTS Entry Test: pass
- IELTS 5.0

Cambridge Preparation B1 Preliminary

- Navitas Cambridge Entry Test: Pass
- IELTS 4.0 or Cambridge English Scale 130

Cambridge Preparation B2 First

- Navitas Cambridge Entry Test: Pass
- IELTS 5.0 or Cambridge English Scale 150

Cambridge Preparation C1 Advanced

- Navitas Cambridge Entry Test: Pass
- IELTS 6.0 or Cambridge English Scale 170

Cambridge Preparation C2 Proficiency

- Navitas Cambridge Entry Test: Pass
- IELTS 7.0 or Cambridge English Scale 190




Find out more



Apply now



#goBEYONDenglish



Head Office

Level 3, 255 Elizabeth Street
Sydney NSW 2000 Australia
T +61 2 8246 6800
E english@navitas.com

Perth

211 Newcastle Street
Northbridge WA 6003 Australia
T +61 8 6330 1600

Sydney Hyde Park

Level 3, 255 Elizabeth Street
Sydney NSW 2000 Australia
T +61 2 8246 6800

navitasenglish.edu.au

Part of the Navitas Group

navitas 

**ENGLISH
AUSTRALIA**
QUALITY | SUPPORT | ASSURANCE

Courses are delivered by Navitas English Services Pty Ltd (ACN 002 069 730), CRICOS Provider Code 00289M. The information contained in this brochure is correct at the time of publication, however, Navitas English reserves the right to alter, amend or delete details at any time without notice.

This brochure is provided free of charge. Printed July 2023.

NAVE230711-1612 0723_AW_WEB