



London, UK





Homestay

Our homestays are carefully selected and offer students the opportunity to learn more about the British culture in a comfortable setting while studying English in London.




welcoming & friendly atmosphere


single and twin room options


good & reliable transport links

Key Information

- Carefully selected by our Accommodation Officers and visited on a regular basis
- Choice of single rooms (or twin rooms if two students book for the same time period) with bed and breakfast or half-board
- Students with B&B bookings normally don't have access to kitchen facilities
- All bed linen and towels provided and changed biweekly
- All our hosts offer at least one washing load per week per student
- All homestays have good and reliable transport links
- Commute time from the London homestays to LSI London Central or London Hampstead by public transport can be up to 60 minutes
- Prices for public transport can vary from zone 1-2 at GBP 164.00 per month, and zone 1-5 at GBP 280.40 per month
- Students who stay for 14 weeks or more can apply for a Student Oyster Card to get a discount of 30% on the prices
- Arrivals between 7:00 am and 11:00 pm on Saturdays or Sundays.
- *Saturday arrivals subject to availability to London Hampstead, please check with the school*

Executive Homestay Option (Private Bathroom)

Executive Homestays have a private bathroom (en-suite or sole use).

Homestay Prices

	Homestay Weekly Rates (per person per week)	Extra Night Rates (per person per night)**
Single room, B&B	GBP 190	GBP 49
Single room, Half Board	GBP 240	GBP 60
Twin room*, B&B	GBP 160	GBP 42
Twin room*, Half Board	GBP 200	GBP 52
Executive single room, B&B	GBP 275	
Executive single room, Half Board	GBP 325	

Supplemental Rates (per person per week)	
Summer Supplement (Jun 16 – Aug 25)	GBP 35
Special Diets B&B / HB	GBP 30 / 50
Christmas Supplement (Dec 23 - Jan 1, 2025)	GBP 50
Executive Supplement	GBP 85
Up to 45min from LSI London	GBP 60

Key
 B&B = Bed and Breakfast (Breakfast only, no kitchen access), No extra nights during the summertime
 * For students booking together with the same arrival and departure dates
 ** Subject to availability. Please check with the school before booking flight tickets



Residences

These options are more suitable for an independent student who is looking for a self-catering accommodation. All students must be 18 or older, unless otherwise noted.

For the London railway (underground and overground) network, please click here: <https://content.tfl.gov.uk/london-rail-and-tube-services-map.pdf>

For information about prices of weekly and monthly travel passes, please click here: <https://tfl.gov.uk/fares>

Canvas Walthamstow



Location

ZONE 3 – approx. 17 minutes to LSI London Central, approx. 30 minutes to London Hampstead by public transport

Minimum age

18

Rooms

Ensuite single room, shared kitchen

Private Bathroom

Yes, all rooms have a private bathroom with a shower.

Meals

Self-catering

Facilities

Communal study spaces, a laundry room and on-site gym are available. Additionally, there are shared social spaces for residents and a 24-hour team.

Utilities, water, and wifi are included. As well as bedding and linens, with an initial kitchen pack.

Availability

Sunday 1st September, 2024 - Saturday 30th August 2025.

Canvas Walthamstow *continued...*



Local Facilities

In Walthamstow, you're in the heart of London, but a world away. With its independent shops, artisan food and street art, it's peaceful but vibrant. Quietly cultured. It suits you.

Located in a peaceful northern neighbourhood, with local entertainment and natural beauty. Nearby is the Walthamstow Wetlands which are London's newest and biggest nature reserve and Walthamstow Market, the longest market in Europe.

Other

LSI student placements are managed by an external agency. Minimum stay 2 weeks.

Transport

The nearest tube station, Blackhorse Road, is a one minute walk away.

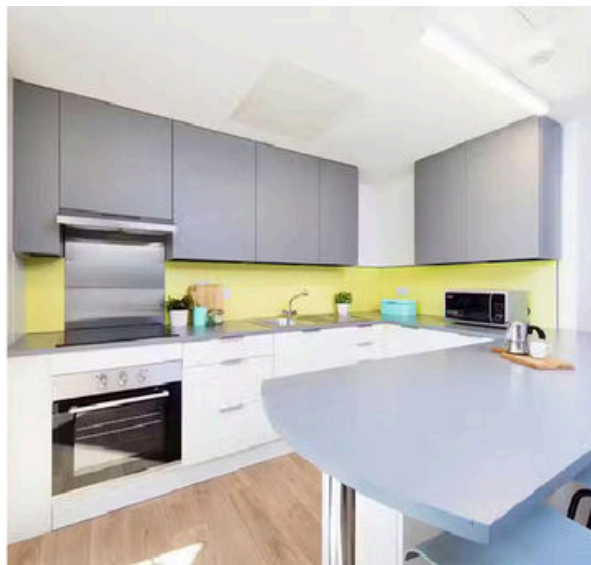
Cancellation Policy

Free cancellation up to 4 weeks before the arrival date

2024 Prices (per person per week)

2-3 weeks	GBP 399
4 weeks+	GBP 380

East Central House



Location

ZONE 1 – approx. 30 minutes to LSI London Central, approx. 35 minutes to London Hampstead by public transport

Minimum age

18

Rooms

Fully furnished single with small double beds

Private Bathroom

Yes, all rooms have a private bathroom with a shower.

Meals

Self-catering

Availability

Year-round

Local Facilities

Located in one of the most desirable places in London. Many shops, restaurants, and bar all within walking distance. Oxford Circus, Camden, and Soho, as well as near the British Museum and the National Gallery.

Shared Facilities

Fully equipped kitchen, laundry, lounge, games room, study spaces, dining area, courtyard, pool table, internet, bike storage

Students are responsible cleaning their rooms.

Communal areas are professionally cleaned once per week.

Bed linen and towels are supplied. Changes biweekly. Bedding pack provided on arrival.

Cancellation Policy

Free cancellation up to 4 weeks before the arrival date

Transport

Many tube stations within walking distance; Old Street station is just 8 minutes away.

The nearest bus stop is Windsor Terrace (Stop Q) which is just a few minutes walk from the residence.

Arrivals and Departures

Sunday to Saturday only. Check in between 3pm - 6pm. Check out 10am.

Other

LSI student placements are managed by an external agency. Minimum stay 2 weeks.

2024 Prices (per person per week)

2-4 weeks	GBP 399
5 weeks+	GBP 375

UCL, Ramsay Hall



Location

ZONE 1 – just a 10 minute walk from our London Central school, and approx. 35 minutes to London Hampstead by public transport

Minimum age

16+

Rooms

Single

Private Bathroom

No, shared bathrooms on each floor

Meals

B&B and Half-Board available

Facilities

Communal kitchen, social spaces, on-site laundry, computer room, bike storage, dining area

Availability

30 Jun 2024 - 11 Aug 2024 for students aged 18+
07 Jul 2024 - 28 Jul 2024 for students aged 16 & 17

Other

Price includes weekly cleaning of the room and change of bed linen. Rooms are furnished with a desk, chair, bedside table, wardrobe, and mirror.

The residence is mixed gender on all floors. LSI student placements managed by an external agency. Minimum stay 1 week.

Transport

Local shopping facilities are available on Tottenham Court Road. Numerous shops, restaurants, and bars within walking distance.

Oxford Street and the West End are just 15-minutes away.

Arrivals and Departures

Sunday to Saturday only. Check-in 3pm and check-out 10am.

Cancellation Policy

Free cancellation up to 4 weeks before arrival.

2024 Prices (per person per week)

Single room, B&B	GBP 399.00
Single room, Half Board	GBP 485.00

Islington Residence



Location

32-34 Market Rd London N7 9AW

Transport

Closest underground station: Caledonian Road

Minimum age

18+

Cancellation Policy

Free cancellation up to 4 weeks before arrival.

Rooms

Single

Private Bathroom

Yes, private bathrooms

Meals

No, self catering

Facilities

On-site gym, study area, social spaces, on-site laundry, and cinema

2024 Prices (per person per week)

Single room

Contact LSI London

Chapter Lewisham Residence



Location

46 Thurston Rd London SE13 7SD

Minimum age

18+

Rooms

Single

Private Bathroom

Yes, private bathrooms

Meals

No, self catering

Facilities

On-site gym, study area, social spaces, on-site laundry, and games area

Transport

Closest underground station: Lewisham

Cancellation Policy

Free cancellation up to 4 weeks before arrival.

2024 Prices (per person per week)

Single room

Contact LSI London

Highbury Residence 11



Location

295 Holloway Road London N7 8HS

Transport

Closest underground station: Holloway Road

Minimum age

18+

Cancellation Policy

Free cancellation up to 4 weeks before arrival.

Rooms

Single

Private Bathroom

Yes, private bathrooms

Meals

No, self catering

Facilities

On-site gym, study area, social spaces, on-site laundry, and games area

2024 Prices (per person per week)

Single room

Contact LSI London